

U1-36NE (AGM)



Nominal Capacity 20°C (68°F)

Nominal Voltage 12V

Nominal Capacity 20°C (68°F)

20 hour rate (1.8A to 10.50V)	36Ah
10 hour rate (3.42A to 10.50V)	34.2Ah
5 hour rate (6.12A to 10.20V)	30.6Ah
1 C (36A to 9.60V)	20.4Ah
3 C (108A to 9.60V)	14.4Ah

Cycle use

- Maximum charging current 10.8A
- Charging Voltage 14.4 to 15V
- Coefficiente -5.0mV/°C/cell

Standby use

- Float Charging Voltage 13.5 to 13.8V
- Coefficiente -3.0mV/°C/cell

Operating Temperature Range

- Charge -15°C (5°F) to 40°C(104°F)
- Discharge -15°C (5°F) to 50°C(122°F)
- Storage -15°C (5°F) to 40°C(104°F)

Terminal

F8

Design Life

- EUROBAT(20 C°) : 3-5 years standard commercial

Charge Retention (shelf life) at 20°C (68°F)

- 1 month 97%
- 3 month 92%
- 6 month 85%

Maximum discharge current for

5 seconds: 540A

Internal resistance (at 1KHz)

- Approx: 8 Oms

DATOS DE RENDIMIENTO

Intensidades de descarga en vatios para distintos voltajes finales a 25 °C (77°F)

Time	End Voltage	1.85V	1.80V	1.75V	1.70V	1.67V	1.65V	1.60V
15	min	119	123	126	129	131	133	135
30	min	74.8	76.6	77.5	78.2	78.7	79.0	79.3
45	min	56.2	57.5	58.0	58.3	58.6	58.9	59.1
60	min	42.0	43.2	44.0	44.5	45.0	45.3	45.6
90	min	32.0	32.4	32.7	33.0	33.3	33.5	33.8
120	min	22.0	23.1	23.8	24.2	24.4	24.6	24.8
180	min	14.8	15.4	15.9	16.3	16.6	16.8	17.0
240	min	11.8	12.3	12.6	12.8	12.9	12.9	13.0
300	min	10.4	10.7	11.1	11.3	11.4	11.5	11.6
600	min	5.13	5.41	5.60	5.65	5.68	5.72	5.80
1200	min	3.24	3.33	3.43	3.45	3.49	3.52	3.55

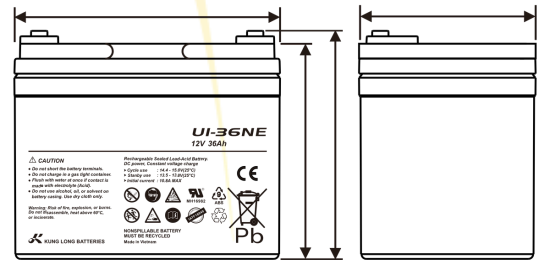
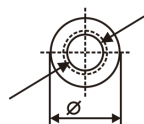
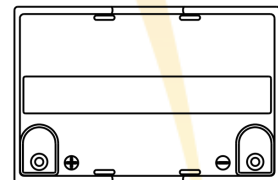
Intensidades de descarga en amperios para distintos voltajes finales a 25 °C (77°F)

Time	End Voltage	1.85V	1.80V	1.75V	1.70V	1.67V	1.65V	1.60V
15	min	57.0	60.2	63.2	66.2	69.2	71.2	72.2
30	min	32.8	34.6	36.2	37.8	39.2	40.0	40.5
45	min	26.7	29.2	30.0	30.3	30.6	30.8	31.0
60	min	19.9	20.6	21.0	21.3	21.6	21.9	22.0
90	min	16.0	16.2	16.6	16.8	17.0	17.3	17.3
120	min	11.7	12.2	12.6	12.7	12.7	12.8	12.9
180	min	8.39	8.74	9.01	9.23	9.39	9.51	9.63
240	min	6.79	7.08	7.22	7.31	7.37	7.39	7.41
300	min	5.75	5.99	6.08	6.12	6.14	6.16	6.17
600	min	3.23	3.34	3.43	3.49	3.53	3.55	3.56
1200	min	1.72	1.77	1.80	1.82	1.83	1.84	1.85

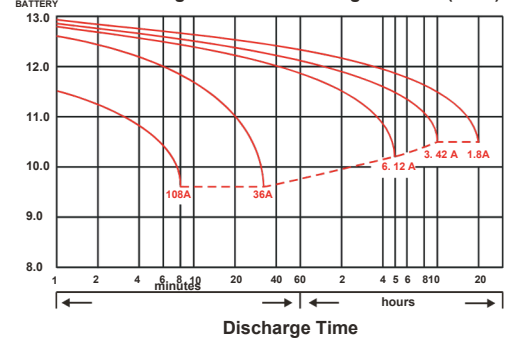
Features

Description of torque value of hardware for the terminals:

- Recommended torque value M6: 7 N-m (71 kgf-cm)
- Maximum allowable torque value M6: 10 N-m (102 kgf-cm)



Discharge Time VS. Discharge Current (25°C)



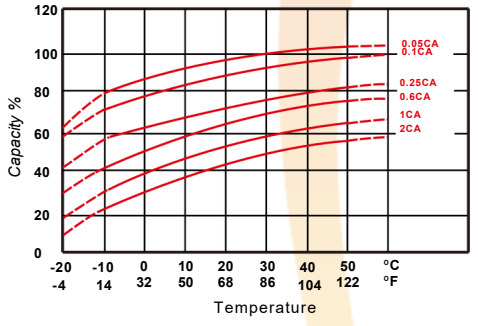
Dimensions and weight

Length (max)	197 mm
Width (max)	131 mm
Height: H1 (max)	159 mm
Total height: H2 (max)	168 mm
Filled weight (max)	11kg (24.2 Lbs)

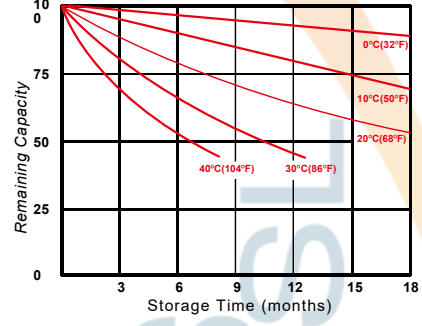
Case material

- ABS UL94 HB
- Option: Flammability resistance of (UL94 V-0)

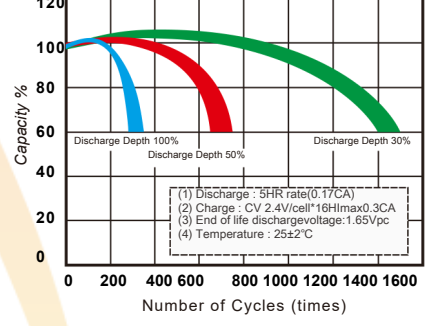
Effect of Temperature on Capacity 25°C(77°F)



Capacity Retention Characteristic



Cycle Service Life



All data on the spec. sheet is an average value:

The tolerancerange : $X < 6\text{min}$ (+15%~-15%), $6\text{min} \leq X < 10\text{min}$ (+12%~-12%), $10\text{min} \leq X < 60\text{min}$ (+8%~-8%), $X \geq 60\text{min}$ (+5%~-5%)

VT Batteries