

WP24-12ANE 12Volt 24Ah

Specifications

Nominal Voltage(V) **12V**

Nominal Capacity

20 hour rate	(1.2A)	to	10.50V	24Ah
10 hour rate	(2.28A)	to	10.50V	22.8Ah
5 hour rate	(4.08A)	to	10.20V	20.4Ah
1 C	(24A)	to	9.60V	13.6Ah
3 C	(72A)	to	9.60V	9.6Ah

Weight **Approx. 7.14kg(15.7Lbs.)**

Internal Resistance (at 1KHz) **Approx. 8 mΩ**

Maximum Discharge Current for

5 seconds: **360A**

Charging Methods at 25 (77)

Cycle use:

Charging Voltage **14.4 to 15.0V**

Coefficient -5.0mV/ /cell

Maximum Charging Current : **7.2A**

Standby use:

Float Charging Voltage **13.5 to 13.8V**

Coefficient -3.0mV/ /cell

Operating Temperature Range

Charge **-15 (5) to 40 (104)**

Discharge **-15 (5) to 50 (122)**

Storage **-15 (5) to 40 (104)**

Charge Retention (shelf life) at 20 (68)

1 month **92%**

3 month **90%**

6 month **80%**

Case Material **ABS UL94 HB**

Option: Flammability resistance of (UL94 V-0)

Terminal **F6**

Description of torque value of hard ware for the terminals:

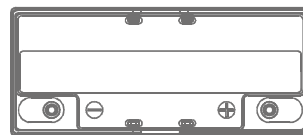
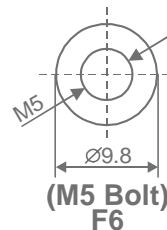
Recommended torque value **M5: 5 N-m (51kgf-cm)**

Maximum allowable torque value **M5: 6 N-m (61kgf-cm)**



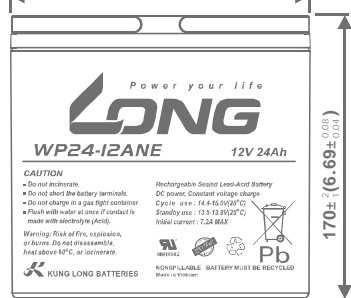
Dimensions

mm(inch)



181±²(7.13±^{0.08}_{0.04})

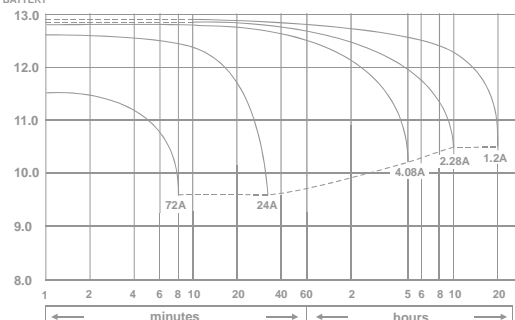
77.5±²(3.05±^{0.08}_{0.04})



170±²(6.69±^{0.08}_{0.04})

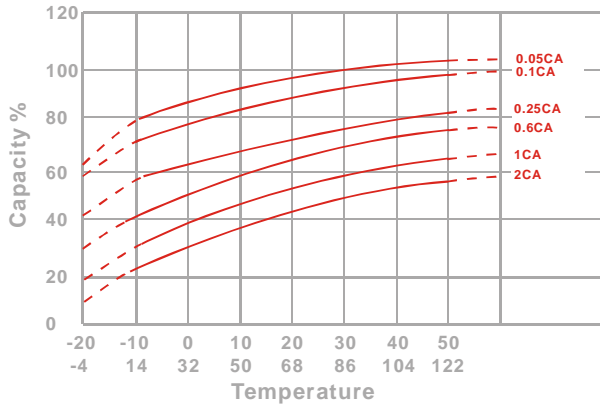
(V)
FOR 12V
BATTERY

Discharge Time VS. Discharge Current (25)

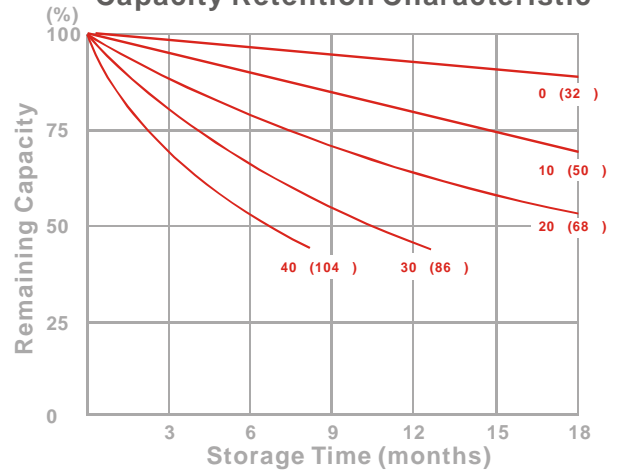


Discharge Time

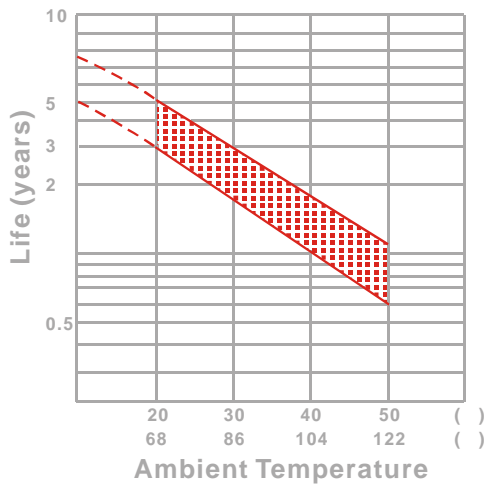
Effect of Temperature on Capacity 25 (77)



Capacity Retention Characteristic



Trickle (or float) Service Life



Cycle Service Life

