

## 6-EVF-20 (12V20AH/20HR)

LONG WAY 6-EVF-20 is one of the Deep Cycle battery of LONGWAY BATTERY.

This series adopts AGM technology, which has high safety & reliability, maintenance-free, high charging rate, low self-discharge, and long life.

Applications: Electric vehicles, Electric scooter, Electric wheel chair, Electric play car for children Sanitation vehicles and police patrol car etc.



### Specifications: Designed according with the IEC60254-2014

Nominal Voltage	12Volts (6 Cells per unit)
Nominal Capacity	@25°C
20hr -rate (1.0A)	20.0Ah @ 1.75V per cell@25°C (77°F)
10Hr-rate (1.86A)	18.6AH @ 1.75V per cell@25°C (77°F)
5Hr-rate(3.40A)	17.0AH@1.70Vper cell@25°C (77°F)
3Hr-rate(5.0A)	15.0AH@1.70Vper cell@25°C (77°F)
Weight	Approx.5.95 ± 3%kg(13.11bs)
Internal Resistance	Approx. 10.0mΩ full charged @25°C
Maximum Discharge Current	300A(3sec)
Operating Temperature Range	Discharge: -20°C~50°C; Charge: 0°C~40°C Storage: -20°C~40°C
Equalization and Cycle Service	14.40~15.0VDC/unit Average @ 25°C
Maximum Charging Current	8.25A
Terminal	I1 (M5 stem)
Container Material	ABS (UL 94-HB) & Flame Retardant (94-V0) available upon request
Self Discharge	LONGWAY batteries can be stored for more than 6 months and the Self-discharge ratio less than 3%per month at 25°C.Please charge batteries before using.

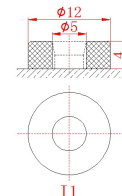
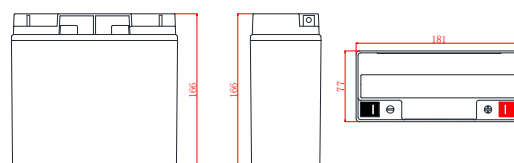
ISO9001:2015  
ISO14001:2015  
ISO45001:2018  
ISO50001:2011

### APPLICATION STANDARDS

- ISO 7176-25 - 2013
- IEC 60254-1- 2005
- SAE J1495-2018
- UL1989 (MH46789)

### Dimensions

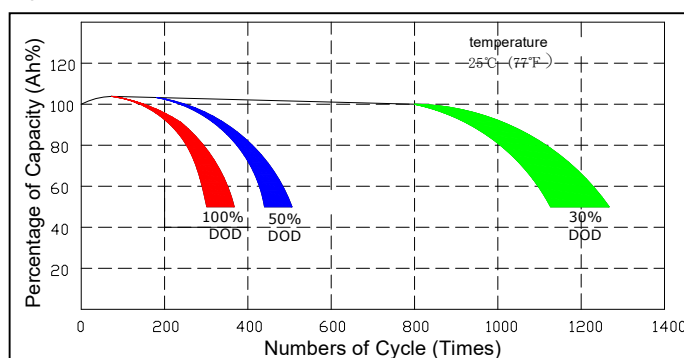
Length:181±2mm  
Width :77±2mm  
Height :166±2mm  
Total Height :166±2mm



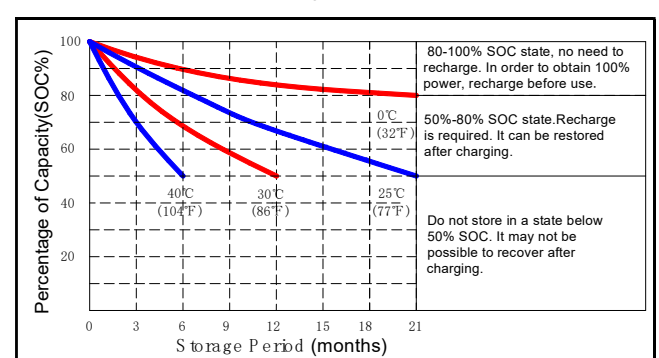
### Outer Dimensions

### Terminal Type

### Cycle Service Life



### Capacity Retention Characteristic



**NOTE:** This information is generally descriptive only and is not intended to make or imply any representation, guarantee or warranty with respect to any cells and batteries. Cell and battery designs/specifications are subject to modification without notice. Contact Long Way for the latest information.